

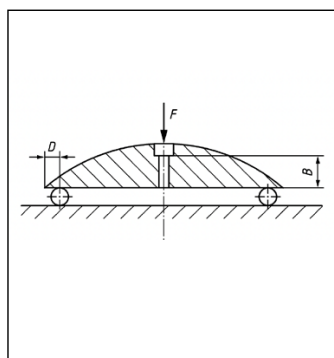


POLYTALON
ENGINEERED CLIMBING HOLDS

Test Certificate DIN 12572-3

COMPLIANCE with safety regulations is important in any sport - but especially in climbing. In addition to personal equipment, this naturally includes the climber's point of contact with the wall - the climbing holds. Compliance with the norm is also essential for the safety of the route setters and to ensure the longevity of the climbing wall. In order to offer your customers the greatest possible fun as well as the greatest possible safety - we test all our holds according to standard specifications. To achieve the perfect balance of ergonomics, design and safety, our weapon of choice is: Polyurethane. Only this material - combined with adherence of dimensional ratios - guarantees compliance with DIN 12572-3.

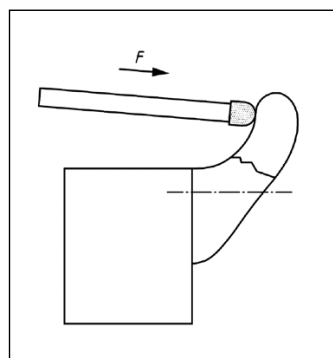
ALL CLIMBING HOLDS are tested in a specially equipped materials testing laboratory. In addition to the specifications required by the standard, we also ensure that internal safety features for the holds are met. Essentially, the following tests are carried out (in addition to internal material checks).



3 Point Bending

Ensures resistance to fastening force.

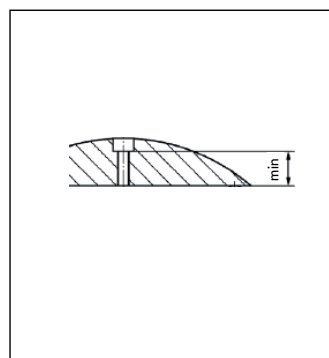
Specifications:
Size S and > : 2000N
Size M : 5000N
Size L and < : 8000N



Constructive Strength

Ensures resistance to climbing force.

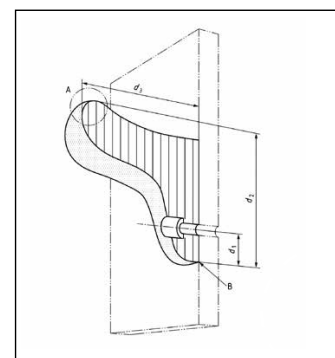
Specifications:
 $F = 2400N$



Minimum Dimension

Additional Safety.

Internal Specification: min = 5mm



Dimensional Ratio

Ensures Protection of Climbing wall and Fixation:

Specifications: See DIN

WE DO EVERYTHING we can to ensure the greatest possible safety - But this only works in cooperation with the gym operators and the route setters, who ensure flawless walls and proper assembly. So that the focus can be back on the essential - climbing!





POLYTALON GMBH ensures that all Polyurethane holds in the shipment with the delivery note

are meeting the requirements of DIN 12572-3***

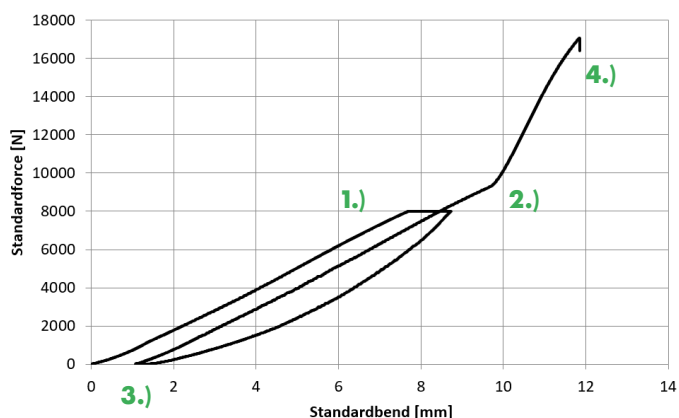
| In this Shipment | Series | Result 3 Point Bending | additional breakage protection | constructive strength | Material below washer* | Dimensional ratio |
|------------------|----------|------------------------|--------------------------------|-----------------------|------------------------|-------------------|
| | Geo | ✓ | | n.t.** | + | ✓ |
| | Moon | ✓ | | ✓ | + | ✓ |
| | Fullmoon | ✓ | | ✓ | + | ✓ |
| | Bats | ✓ | | n.t.** | + | ✓ |
| | Sahara | ✓ | | n.t.** | ++ | ✓ |
| | Fatbat | ✓ | ✓ | ✓ | ++ | ✓ |
| | Yings | ✓ | ✓ | ✓ | ++ | ✓ |

*Check recommended torque and fixation especially for flat holds.

** n.t. = not tested, not necessary because of dimensional ratios

*** The tests were carried out using the most up-to-date material available at the time.

Fatbat_dt_XL_Jug



Exemplary Test sequence

- 1.) Ramping up until required Force
- 2.) Maintaining the required holding time with specified force
- 3.) Ramping Down
- 4.) Ramping Up until breakage (not required according DIN)

Polytalon GmbH,

(represented by Marcel Bajerke, Adrian Flaig & Philipp Ruf),

certifies that climbing holds listed above, except where otherwise clearly indicated, are produced in Germany in accordance with the European standards DIN EN 12572-3

